

Deserts are hot dry places where little plant life can grow. Hot deserts may be barren areas of rock and sand, but some animals can cope with very little water.



Rainforests are green, lush forests that grow near the Equator. They are the richest of all biomes, home to more kinds of plants and animals than any other habitat in the world.

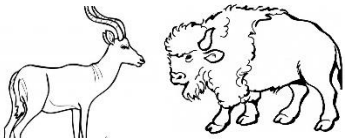


Tundra are frozen solid for most of the year, but thaw out a little during spring and summer. Animals such as caribou and nesting birds make their home here.



Temperate Plains or Grasslands

Dry grassy prairies and plains
Have hot summers and cold winters. Animals such as bison and antelope graze here.



African Savana

These tropical grasslands are found in Africa. They have long dry periods followed by wet seasons with heavy rainfall. The savanna is home to huge herds of grass-eating animals and powerful predators that feed on them.



Mountains

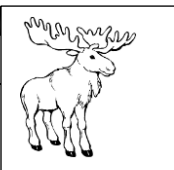
The tops of high mountain ranges are very cold, and few plants grow there. Animals living in these high places must cope with cold and very lack of food (or very little food) and steep, rocky terrain.



Taiga



Coniferous forest are often found in Canada, Alaska, Russia, and northern Europe. The Tundra is home to animals like the moose, wolves, and



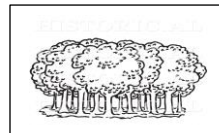
Wetlands

(swamps, bogs, or marshes)

Wetlands can be a good home (or habitat) or different animals and plants. The Florida Everglades are large wetlands in the United States.



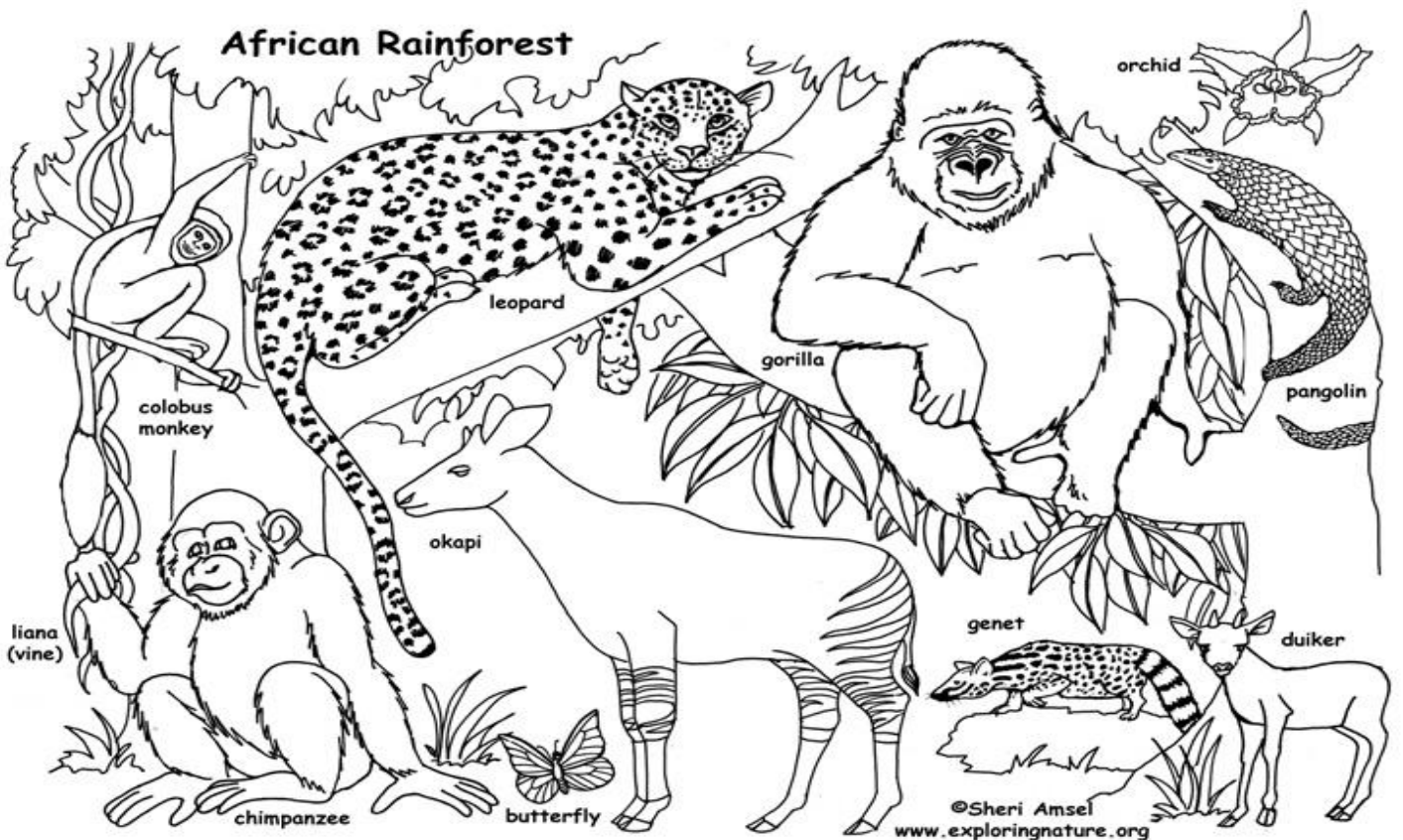
Deciduous forest



Deciduous forests are the temperate forests that lose their leaves in autumn and winter. Different animals live here.

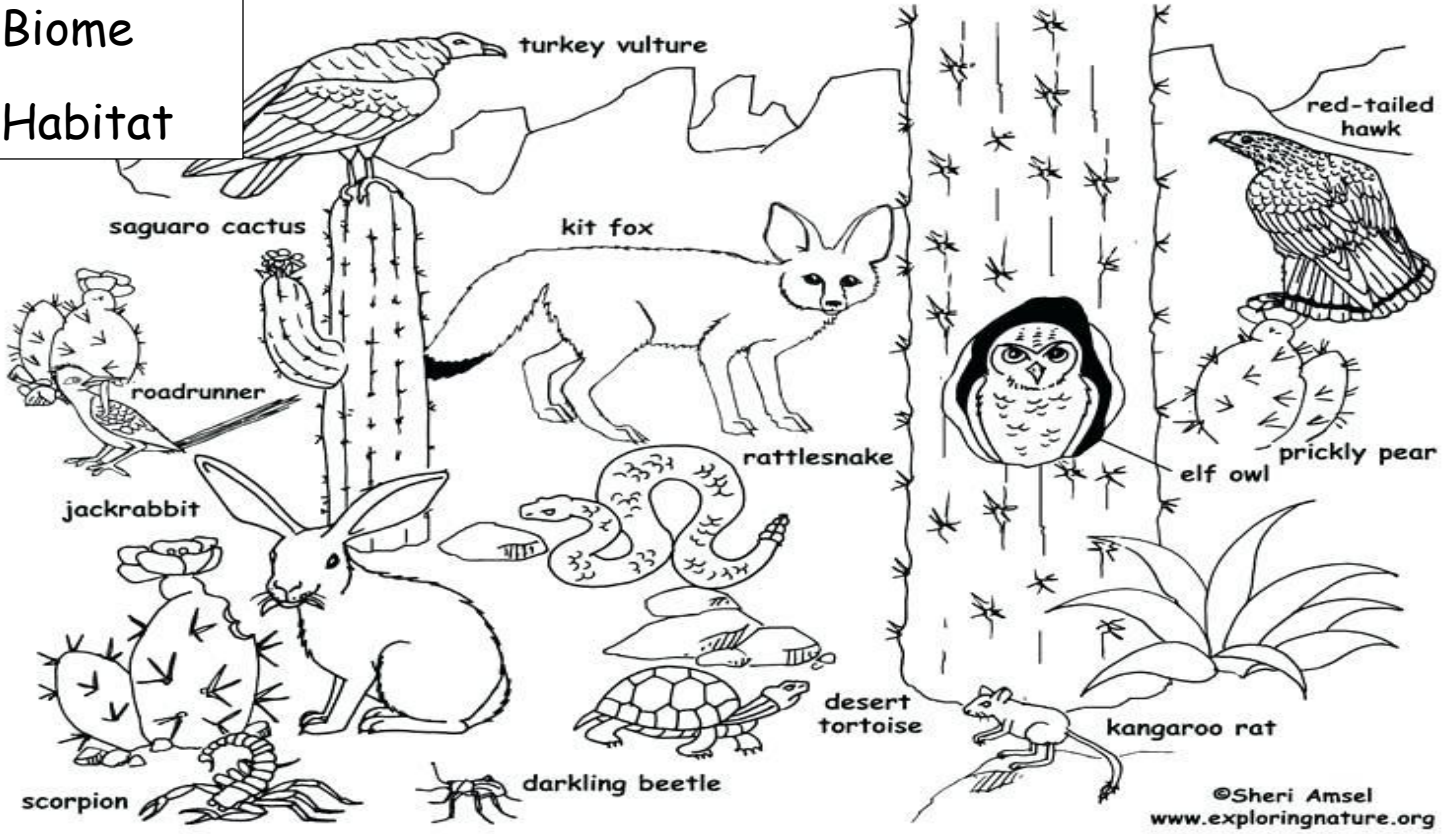


African Rainforest



©Sheri Amsel
www.exploringnature.org

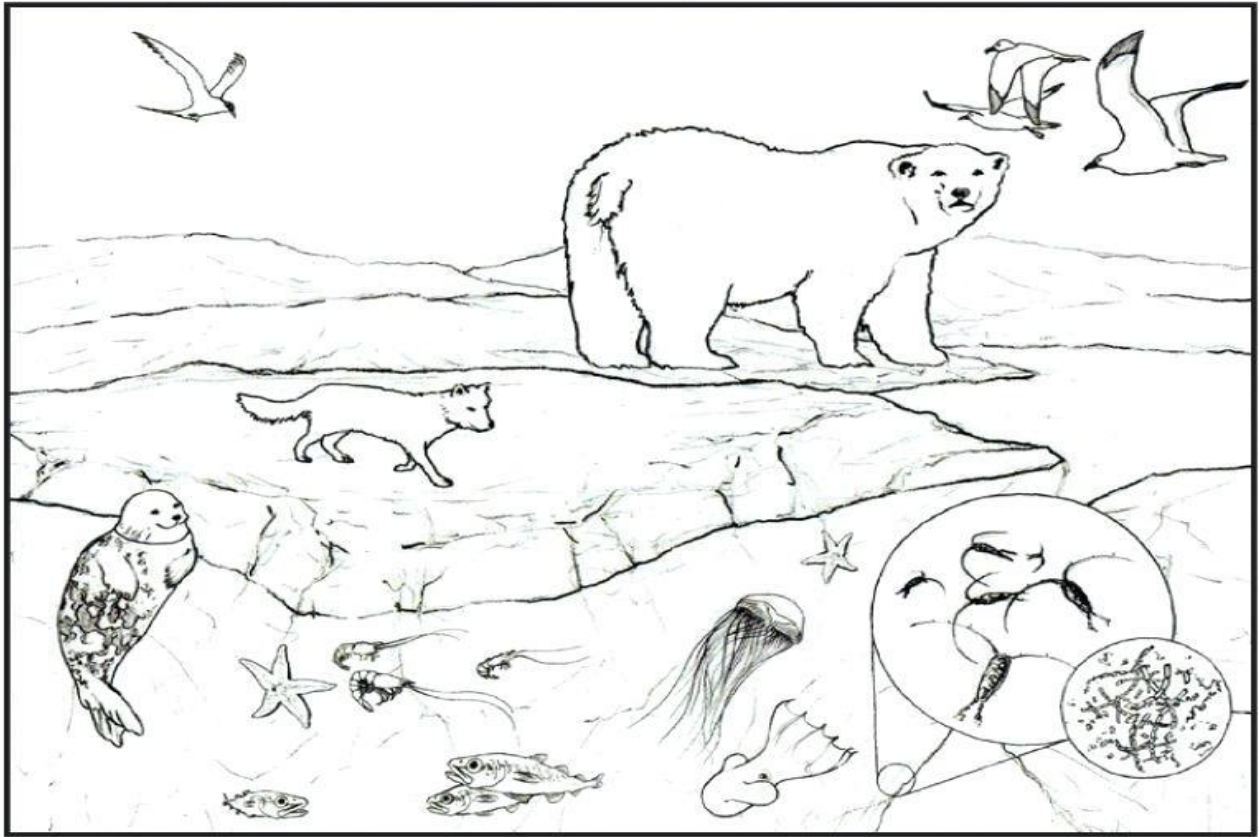
Desert Biome Habitat



©Sheri Amsel
www.exploringnature.org

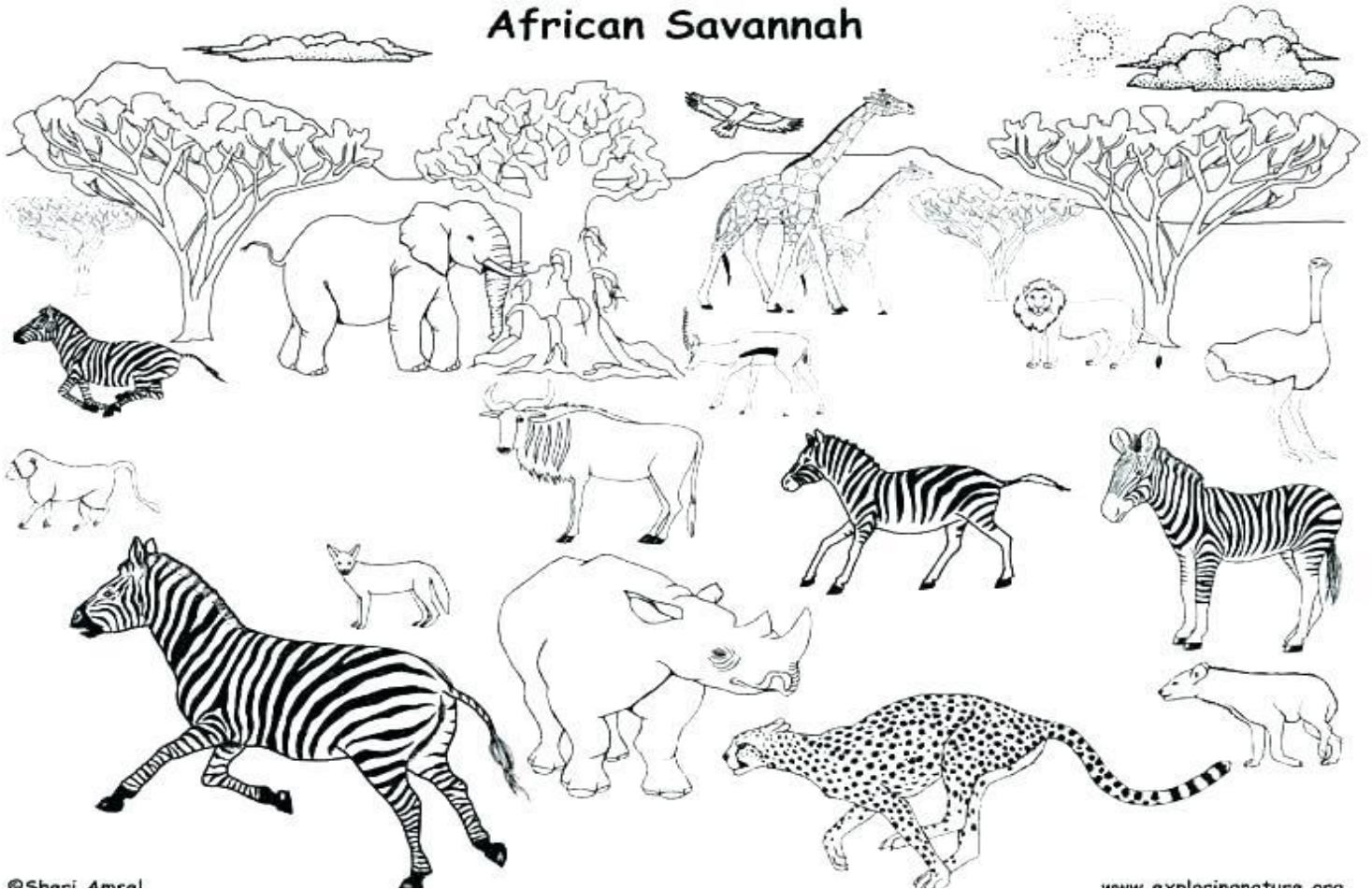
Tundra

Arctic Ecosystem



© 2012 National Geographic Society

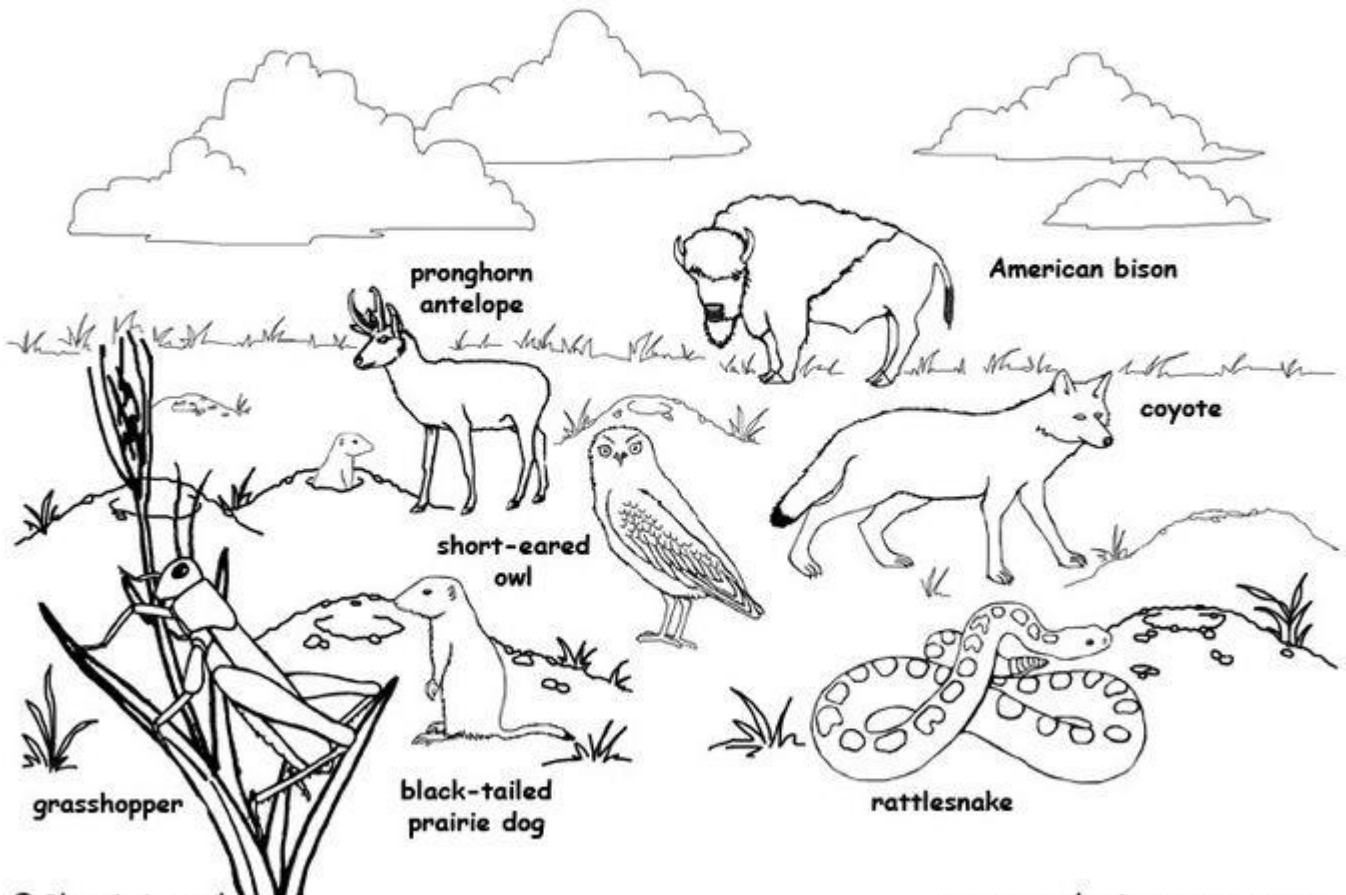
African Savannah



©Shari Ameal

www.gynacianature.com

American Grasslands, Prairie, Plains Animals



Ocean Animals

